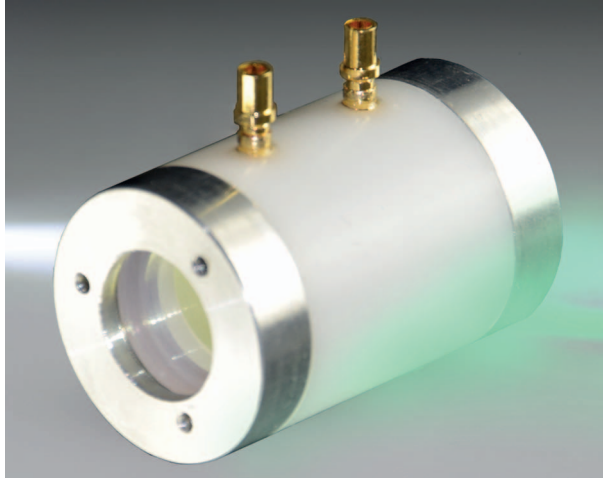


Lights on!

Pockels Cell (KD*P)



Highlights:

- Compact
- Low cost

Our offer in Detail:

Our KD*P Pockels cells use high quality crystals and coatings to provide excellent performance from UV to 1100nm. This covers all of the major wavelengths required for Q-switching Nd:YAG and similar lasers.

We offer four standard sizes as well as custom sizes upon request.

General Specifications:

Deuteration Level	>98%
Quarter-Wave Voltage	<3.6kV at 1064nm
Optical Damage Threshold	>600MW/cm ² at 1064nm, 10Hz, 10ns
Extinction Ratio	>1000:1
Capacitance	5-10pF
Parallelism	<20arcsec
Perpendicularity	<5arcmin
Angle Tolerance	$\Delta \theta < \pm 0.3^\circ$, $\Delta \phi < \pm 0.3^\circ$
Windows AR Coating	R<0.1% at 1064nm
Transmission	>98% at 1064nm
Dimension Tolerance	$\pm 0.1\text{mm}$
Flatness	$\lambda/8$ at 633nm
Clear Aperture	>90%

Model Specifications:

Article No.:	50.250.00025	50.250.00005	50.250.00006	50.250.00007
Aperture	$\phi 6\text{mm}$	$\phi 8\text{mm}$	$\phi 10\text{mm}$	$\phi 12\text{mm}$
Dimensions	$\phi 16 \times 20\text{mm}$	$\phi 20 \times 29\text{mm}$	$\phi 25.4 \times 39\text{mm}$	$\phi 28 \times 33\text{mm}$

Your problem is our challenge - flexibility is our standard:

We will gladly adapt, for example, the coating or the aperture to suit your application. Let us know your requirements.